

***Diana Stelin: 'Melting into nature works!'***





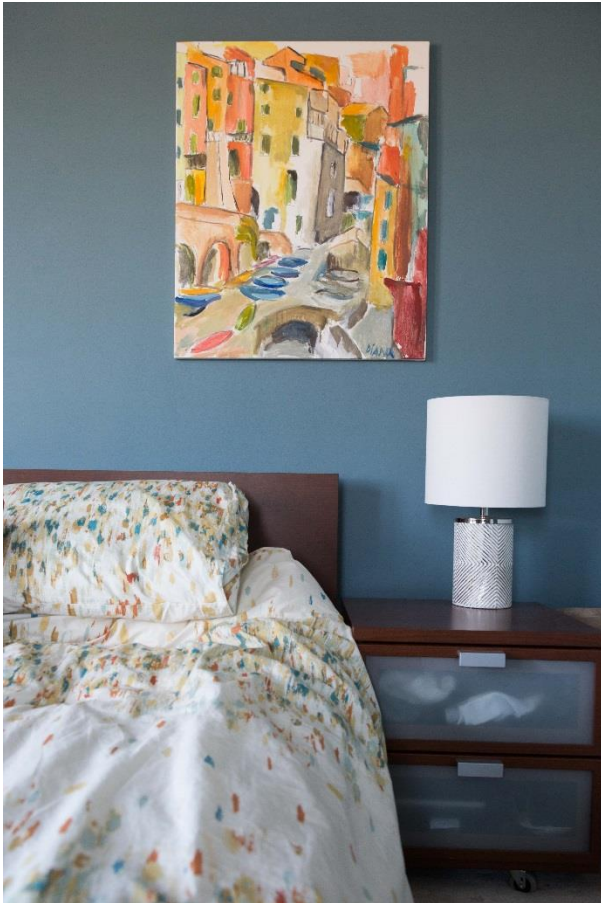
## *About the Artist*

Being a successful business owner, a mother of three and a painter is what one may describe as having your hands quite full. Yet, it's this combination of opposing roles that makes Diana Stelin so successful. Her career as an educator gives her life a larger purpose, an ability to share with her students of all ages the various ways to become inspired and balanced in their daily lives. Her time with her kids becomes more meaningful and fulfilling with a structured routine. Most importantly, the life balance exists due to her unwavering practice as a professional artist. It is through her ability to dissolve into her melted landscapes that she gathers strength to do it all again day in and day out.

Being an immigrant from Moldova, who relocated with her family at the age of thirteen, she is always 'Searching for a Place to Call Home' – (coincidentally a title of her blog and novel where she shares insights into her artistic psyche). Her Russian-Jewish family received refugee status at the time of the tumultuous Transnistria conflicts of the 1990's. Coming of age during immigration left a permanent mark, taking away her sense of belonging. Therefore, her practice as an artist, which began shortly after the move, has always centered on finding new homes in the landscapes she paints.

Diana Stelin traveled extensively during her studies and is currently living in Boston, a perfect milieu for gorgeous scenery all year round. She loves the changes of seasons and spends as much time outdoors with her brood as possible. From the mountains of Maine, to the lakes of Cape Cod, from old world brownstones of Boston to its European church tops, you see all sorts of outdoor inspirations in her work. It is in fact this desire to teach about the benefits of being outdoors that made Ms. Stelin name her award winning teaching studio, 'The Plein-Air Art Academy'.

Collectors' Installs and Quotes:



Her melted landscapes are truly magical, able to breathe vitality and energy into both private and corporate spaces. Ms. Stelin's pieces grace a number of private collections around the United States and have been featured at Novartis headquarters in Boston and at Childrens' Hospital. Here is what some

collectors say of her pieces, that draw inspiration from her travels around the globe:

*"They remind me of one the best vacations I had in Italy when I was young, naive and in love. It represents for me everything that youth does: the freedom of expression, spontaneity, naiveté, delicate awkwardness and colorful emotionality."*

*"I like that all shapes and subjects have soft blurry edges that don't dictate anything and can be interpreted one way or another."*

"Diana is a master of passionate, evocative color, texture and mood!"

As Seen In:

The  
Boston  
Globe

MarketWatch

BostonVoyager



realtor.com®

realtor.com®

*Harness*

MAGAZINE



mother  
nature  
network

The Daily Free Press

**HYPERALLERGIC**

---

*The Tree Series*

---

These are just a few of the tree transformations in this series of oil and melted wax paintings. View more paintings from this series on Diana's website by clicking [here](#).



*“Trees are symbolic of us with their imperfections, striving for the sky, yet spreading in all kinds of directions. Trees connect, have offspring, break off. I like to show how one element melts into another, always wanting to become one with the universe.”*

## *The Dreams Series*

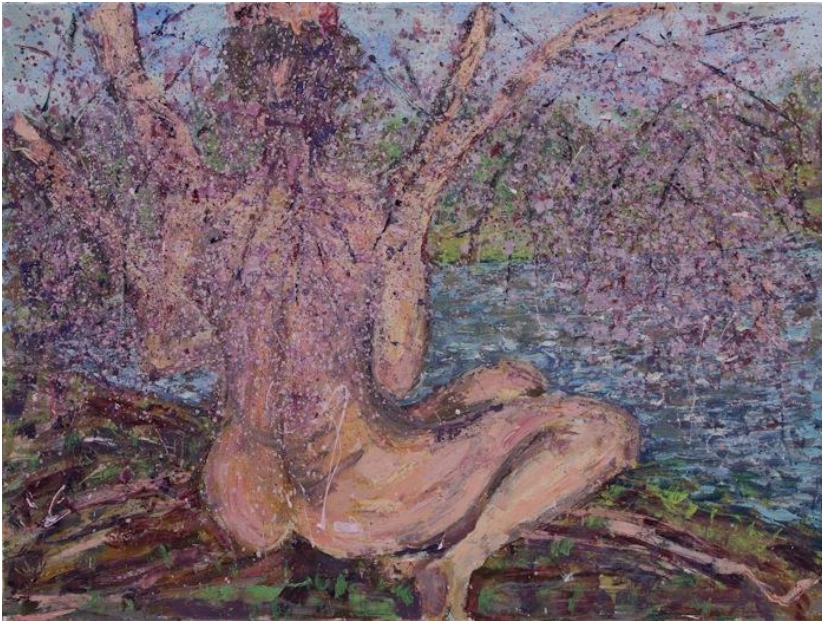
These are fairytale-like locales where our inner child would want to reside. They're imagined landscapes that are part of an ultimate princely story. Based on actual places, sections of them melt with layers of oil pigments and wax, creating stories with multiple chapters.



*This piece graces an outer wall of Childrens' Hospital in Boston, a winner of a juried call*

## *The Daphne Series*

“In my 'Daphne' series, a voyeur melts into the landscape. This Greek myth has a woman turning into a tree, and it's key for me to be able to show that we are able to become one with the universe. My goal is to demonstrate that we're all part of something bigger than all of us and it's incredibly rewarding to stop and take some time to dissolve into our surroundings.”



*Plein-Air Watercolor Sketches*

These are some of the most dramatic and sensual pieces in Diana Stein's oeuvre as they are direct translations of emotions of the moment. They breathe with raw energy and excitement about being outdoors, reveling in the breezes of the various seasons and locales.





*More Information: Sales and Press Inquiries*



Diana Stelin Art  
320 Washington St Suite 215  
Boston, MA 02135  
(617) 407-3858

300 DPI Image files can be  
requested via email at  
[info@dianastelin.com](mailto:info@dianastelin.com)

[www.dianastelin.com](http://www.dianastelin.com)